



PAKISTAN  
PETROLEUM  
Exploration

&  
Production Data  
Repository

just a click away!

access, store  
retrieve & purchase

ALL E&P DATA OF PAKISTAN  
O N L I N E



DIRECTORATE GENERAL PETROLEUM CONCESSIONS (DGPC)

PAKISTAN  
PETROLEUM  
Exploration &

Production Data  
Repository

Mr. Imran Ahmed  
Director General Petroleum Concessions

3rd Floor Petroleum House  
Ataturk Avenue G-5/2, Islamabad  
Postal Code 44000  
Tel: 051 9202200, 9204176

9th Floor, No 55-C,  
PTET/Ufone Tower, Jinnah Avenue,  
Islamabad, Pakistan  
Postal Code 44000  
Phone: +92 51 111 101 101  
Fax: +92 51 831 7933  
Email: support@ppepdr.net

access, store  
retrieve & purchase

ALL E&P DATA OF PAKISTAN  
O N L I N E

[www.ppepdr.net](http://www.ppepdr.net)



[www.ppepdr.net](http://www.ppepdr.net)



Easy, secure access to online quality-assured Petroleum Exploration & Production Data.

PPEPDR is a centralized digital database for all seismic, well, and unstructured data of Pakistan that can be accessed online; leveraging time and cost for exploration decisions. The major objective was to make data available online for E&P companies who wish to subscribe to the service. ~ one-two petabytes of secure Petrotechnical data made available to clients through online data management system & services, among other benefits, fast web-based E&P data review provided to subscribers. Data review room for onsite data review and Pakistan Petroleum Information Service [E&P scouting service] are also established under PPEPDR project for quick and efficient access of technical data and information for E&P companies.

In 2001 a National Data Repository (PetroBank) implemented under PPEPDR project in order to improve the speed and ease of accessing, sharing geotechnical data. The highly scalable PetroBank architecture is an integrated system, accessible through the Power Explorer interface. It is capable of providing an integrated view of information from multiple external databases as well as



data stored in PetroBank.

With this cutting-edge technology a significant milestone was achieved in the E&P Industry of

Pakistan. Since 2001, set up of a state-of-art online data repository for digital and physical data, for access, storage, retrieval and purchase by prospective E&P companies. Expansion & enhancement of the Online Data Repository with Disc Based Solutions achieved through different milestones of the project.

To manage Pakistan's E&P data more effectively and increase E&P activities in Pakistan by reducing costs; PPEPDR endures to provide following benefits to Pakistan E&P industry.

### Highlights of PPEPDR

#### Some key benefits are as under:

- ▶ More effective and safe data trading
- ▶ Quality assured fast data distribution
- ▶ Promot Pakistan image in the international market
- ▶ Establishment of E-Rooms at local & international level for Block evaluation and licensing rounds.
- ▶ Attracting direct foreign investment in E&P sector
- ▶ Promotion of Exploration & Production activities in Pakistan
- ▶ Faster project lifecycle for exploration decisions.
- ▶ Groomed and utilized in-country resources

#### Key functions

- ▶ Data selection
- ▶ Data viewing
- ▶ Data request
- ▶ Data trading
- ▶ External data access
- ▶ Data security
- ▶ Maintenance of data



### SUBSCRIPTION PACKAGES

- PetroBank subscription by interested companies is based on the criteria mentioned below.

The subscription fees would be in addition to the DGPC approved data sale prices.

#### Full Members

- Any company whether or not operating in Pakistan can become full member on the payment of annual operation & maintenance fee of US \$ 21,000. Full members are entitled to the following benefits free of cost.

#### Benefits:

- Free access to Pakistan digital database (cultural & seismic navigation data) that will allow them to have fast data selection for their exploration & production activities.
- ▶ Free online data review for the limited time as allowed by DGPC from time to time.
- ▶ Free access to hardcopy review of data
- ▶ Four free subscription of PPIS
- ▶ Two user annual license access for Power Explorer.

#### Associate Members

- ▶ Any company whether or not operating in Pakistan can become an associate member on the payment of annual operation & maintenance fee of US \$ 12,600. Associate members are entitled to avail following benefits free of cost.

#### Benefits

- ▶ Free access to Pakistan digital database (cultural & seismic navigation data) that will allow them to have fast data selection for their exploration & production activities.

- ▶ Free online data review for the limited time as allowed by DGPC from time to time.
- ▶ Free access to hardcopy review of data.
- ▶ Two free subscription of PPIS.
- ▶ Single user annual license access for Power Explorer

#### Non Members

Companies, which are operating in Pakistan and have not subscribed for full and associate membership of PetroBank or equivalent, a subscription fee of US\$ 105 per hour will be charged, which would allow them to access the database subject to DGPC approval.

#### Temporary Members

Companies, that are not operating in Pakistan and who register interest with DGPC for potential investment in upstream sector, may obtain free subscription which will allow them to access the database for selection of the data as allowed by DGPC.

#### Downloading Charges

Companies intending to download data on-line will pay download fee @US\$ 3 per line kilometer for seismic and US\$ 53 per well. These charges would be in addition to existing DGPC approved data sale prices.





### How to become a member?

- Intended clients will fill the Subscription form, available on the website (www.ppepdr.net).
- A Terms & Conditions agreement will also be signed by the client for online data access (available in digital format on www.ppepdr.net)
- Form will be received at PetroBank Support Desk.
- It will be forwarded to DGPC for approval.
- Upon approval, invoice for the subscription fee will be sent to the client.
- After payment receipt, user login name and password will be generated and forwarded to the client to access Power Explorer.

### Minimum Hardware Requirements

- Other than the following, there is no other software or hardware requirement at the client's end. The Power Explorer front end would be accessed by the client on an annual basis from the PPEPDR facility.
- Core i5 system with 3.6 GHZ speed and 4 GB RAM.
- Digital Subscriber Line (DSL) connection with average speed ~ 2MB or higher.

### Online Data Purchase Procedure

Step 1

Companies would access the website via the Internet utilizing their login names and passwords; permanent or temporary as the case may be;

Step 2

After accessing the system the users will visually identify their area of interest and review the list of available data in that particular area;

Step 3

Submission of data purchase or review request via digital form;

Step 4

Once the PetroBank Administrator (at the PPEPDR Project Office) receives the online request the same would be entered into the database;

Step 5

The request is immediately presented to the approving authority at DGPC, which can be accessed via web interface;

Step 6

The approving authority would have the option to grant approval for the complete or the selected data set;

Step 7

After obtaining approvals from DGPC, PPEPDR would issue an invoice for advance payment to the client;

Step 8

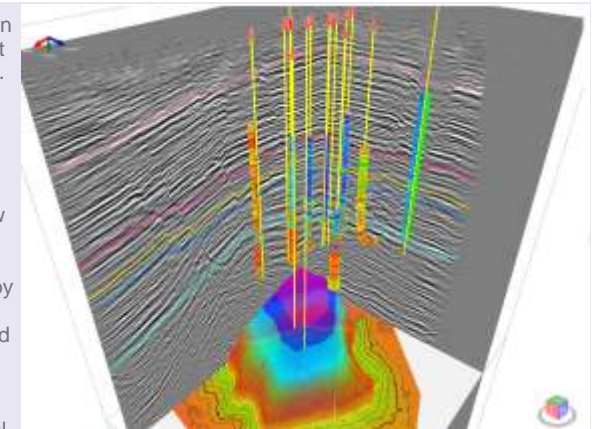
Full payment received in advance from client;

Step 9

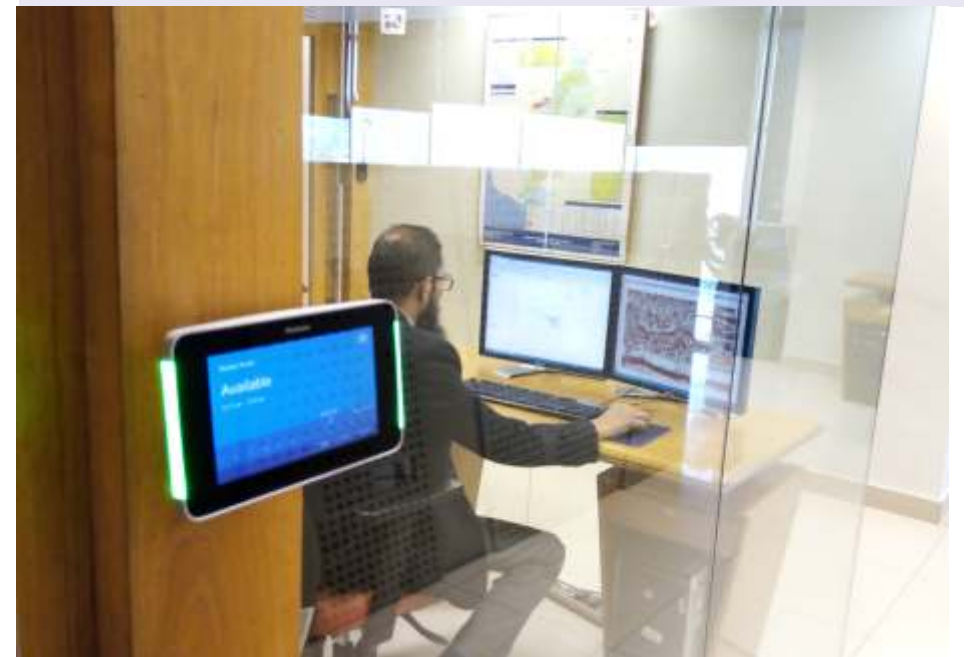
Data made available for download.

### Data Review policy

- All G & G data available in Pakistan will be provided for reviews subject to prior DGPC policy and approval.
- For data confidentiality, Systems available for digital data reviews are not equipped with USB, DVD reader/writer and internet connection.
- Additional data required for review other than approved data, will require separate DGPC approval.
- As per strict prohibition imposed by DGPC, Snapshot, Photographs and notes writing are not permitted for any of the data set to be reviewed.
- Reviews will be conducted on assigned date and time. Additional time required for review will be assigned as per availability of review room.



Data is downloaded at high speed and loaded directly into interpretation environment, including its immersive 3D visualization theatre.







### Existing Data Sale Procedure

In addition to the online data facility manual data access and sale procedure would run in parallel, which is as follows.

The data review request is received from E & P companies either at DGPC or at LMK Resources.

After receiving the data review request authorisation from DGPC, data review is arranged only for public domain data.

Cost estimates are forwarded to respective companies on the basis of their selected data sets after data review which are in public domain.

After receiving data purchase request from E & P companies, data release approval is obtained from DGPC. DGPC reserves the right to accept or reject any data purchase request.

Advance payment invoice is generated at LMK Resources and sent to concerned company as per DGPC rules, release of data is subject to full advance payment of data.

Upon receipt of full payment, data is released and transmitted to the concerned company.

### Existing DGPC Approved Data Sale Price List

1. Seismic Digital Field Data:
  - a) Data falling in the licensed area of operator

#### Demultiplex SEG A/B/C/D to SEG Y

Input Type	US\$ per input
3600' 9-Tracks	55.00
2400' 9-Tracks	50.00
1200' 9-Tracks	30.00
3480 Standard	45.00
3480 XL	55.00
8mm/4mm	00.30 per MB
Sticky Tapes	100.00
3490/3490E	40.00
3590/3590E	70.00
3592	225.00
LTO	40.00
DLT/SDLT	60.00

#### Reformat Non SEG

Input Type	US\$ per input
3600' 9-Tracks	125.00
3000' 9-Tracks	110.00
2400' 9-Tracks	100.00
1200' 9-Tracks	50.00
600' 9-Tracks	40.00
3480 Standard	75.00
3480 XL	55.00
3490/3490E	40.00
3590/3590E	70.00
3592	225.00
LTO	40.00
DLT/SDLT	60.00
EXABYTE(8mm/4mm)	00.30 per MB

a) Data falling outside the licensed area of operator **US\$ 80.00 per LKM**

#### Output Media

Medium	Cost in US\$
Exabyte (8mm/4mm)	30.00
3592	200.00
LTO	30.00
DLT/SDLT	40.00

#### Seismic Processed Data

- a) Digital Processed Data on Tape in SEG Y Format **US\$ 26.00 per LKM**
- b) Hard copy processed Data
  - I. US\$ 21.00 per LKM for paper medium
  - II. US\$ 26.00 per LKM for sepia medium



#### 3D Seismic Data

3D Seismic Digital Field Data  
**US\$ 525 per Square KM**  
3D Seismic Digital Processed Data  
**US\$ 370 per Square KM**

#### Well Logs Data

##### a) Digital Well Logs

- I Upper Indus Basin: **US\$ 945.00 per Well**
- II Middle Indus Basin: **US\$ 735.00 per Well**
- III Lower Indus Basin: **US\$ 525.00 per Well**
- IV Offshore: **US\$ 945.00 per Well**

b) Hardcopy Well Logs and maps  
Paper copy log and map data is measured in Sq. Ft and is charged @ **US\$5.00 per sq. ft.**

c) Hardcopy Reports A4 pages  
Paper copy A4 pages reports are charged @ **US\$ 1.00 per page.**

Note: 20% Geodata charges would be applied on all above mentioned prices and would be added to the total amount.



Repository contains ~ one-two petabytes of secure petrotechnical data.